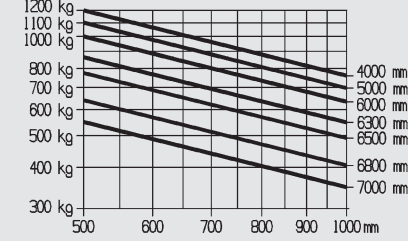
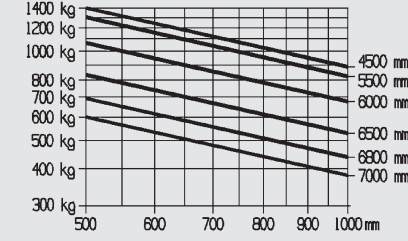


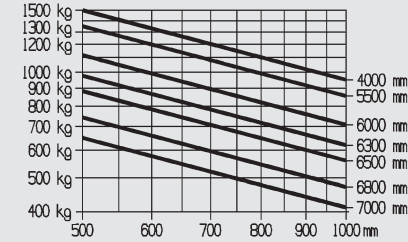
E12



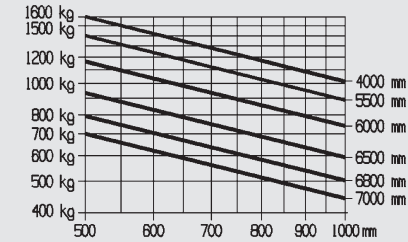
E14



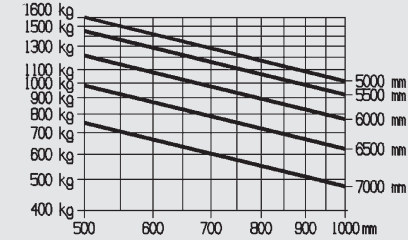
E15



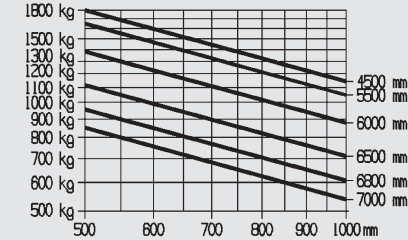
E16/E16C



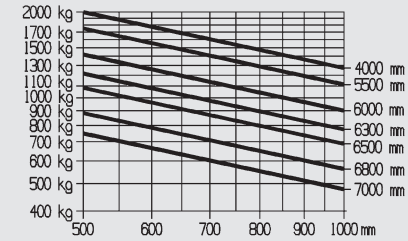
E16L/E16H



E18/E18L



E20L



Standard Equipment/Optional Equipment

Standard Equipment

- Linde twin drive pedals to control forward/reverse travel and braking
- Original Linde Load Control integrated in armrest
- Hydraulic suspended seat with extensive range of adjustment
- Hydrostatic power steering
- Three wheel configuration with original Linde center-pivot axle for excellent manoeuvrability
- Linde compact drive axle with maintenance free oil-bath disc brake
- Famous Linde dual motor drive with 2 x 4,6 kW for 48 V models and 2 x 3,5 kW for the 24 V models
- 11 kW (48 V) maintenance free AC lift motor, 10 kW for 24 V models
- Curve Assist for automatic, proportional speed adaption
- Plenty of storage space for writing utensils, beverage cans ...
- Anti-glare display with clock, hour meter, service information and accurate battery condition indicator
- Standard truck fits into ISO containers
- Superelastic tyres

Optional Equipment

- Single drive pedal with direction selector on armrest
- Overhead guard can be upgraded to full cabin with roof, front-, rear screens and doors (also available with tinted glass)
- Wiper-washers for front, rear and roof screens
- Further seats with additional comfort and adjustments
- Cab heater with integrated pollen filter
- Radio with speakers
- Sun screen, clipboard and interior light
- Standard mast lifts up to 5650 mm
- Duplex mast (full free lift) lifts up to 4145 mm
- Triplex mast (full free lift) lifts up to 6075 mm
- Single or double additional hydraulics for all mast types
- Tilt cylinder- and roof protection
- Integrated sideshift
- Integrated fork positioner
- Mirrors

- Linde original Blue Spot
- Road traffic specification
- Load backrest
- Swivelseat
- 12 V socket
- Truck lighting, working lamps
- Cold store protection
- Custom paintwork
- Linde Fleet Management (LFM)
- Active ventilation while charging

- Linde energy management**
- Customized horizontal and vertical battery change incl. NEW hydraulic battery shift
- Built-in high frequency onboard charger for convenience and flexibility
- Recirculation of electrolyte

Other options available on request

Battery capacity for low version (h6=1,970 mm):
 E12=24 V/575 Ah, E15=24 V/920 Ah, E14=48 V/460 Ah,
 E16=48 V/575 Ah, E16C=48 V/460 Ah,
 E16L=48 V/690 Ah, E18=48 V/575 Ah,
 E18L=48 V/690 Ah, E20L=48 V/690 Ah
 Battery capacity for high version with increased battery capacity (h6=2,130 mm): E16H=48 V/700 Ah

- New STANDARD features for the EVO models:**
- New seat/armrest generation for outstanding ergonomics
- Improved energy consumption
- Enhanced tractive force and climbing ability
- Self-activating parking brake
- Individual drive dynamic mode providing perfect combination of performance and efficiency
- Showing battery operating time by the minute
- Dust and dirt protected Linde Load Control
- Enlarged step-in for high models
- New diagnostic plug for fast service access
- Sensitive traction control for Linde dual motor drive



Electric Counterbalanced Trucks
 Capacity 1200 - 2000 kg
 E12 EVO®, E14 EVO®, E15 EVO®
 E16 EVO®, E18 EVO®, E20 EVO® 386_02



Safety

The protective overhead guard forms a strong and completely enclosed protective zone providing optimum structural integrity, safety and protection for the operator. The top mounted tilt cylinders provide seamless, smooth control of the tilt movements for excellent load stability in all operating conditions. This unique design also enables slimmer mast profiles to be fitted for outstanding visibility.

Performance

One would expect a high performance truck to have a high performance traction system – and that is exactly what the Linde compact drive axle and lift system delivers. Powerful motors and intelligent electronic control form an impressive power pack to deliver the highest levels of productivity.

Comfort

Consistently high levels of performance and efficiency for extended periods are only possible if the operator feels comfortable. The ergonomic layout of all the controls, the adjustability of the armrest and seat, Linde Load Control and twin accelerator pedals provide the best possible intuitive interface between the truck and the operator.

Reliability

An electric fork lift truck depends on reliable electronic systems. The Linde electronic control system provides a high level of reliability because of its dual circuit monitoring system and the sealed aluminium housing which provides total protection for the electronics from the ingress of dust and moisture.

Productivity

Effective in operation, efficient in reducing costs: the unique Linde energy management system ensures intelligent and economical consumption of energy. Energy can also be obtained quickly utilising the optional built-in charging unit or one of the five simple and rapid battery changing methods. The result: more uptime and increased productivity.

Features

- Linde clearview mast design**
- With top mounted tilt cylinders for seamless load control and stability
- Excellent view of load and surroundings through the robust yet slim mast profiles
- Nominal capacity retained to maximum lift heights
- High residual capacities in all applications
- Exceptionally stable



- Linde hydrostatic power steering**
- Minimal physical demands on the operator
- Compact ergonomically designed steering wheel
- Linde close coupled steer axle for outstanding manoeuvrability
- Less tyre stress

- Linde twin accelerator control**
- Seamless, rapid reversing without repositioning the feet
- Short pedal travel
- Fatigue-free working
- Increased throughput and performance

- Linde Load Control**
- Small tactile joystick integrated in an adjustable armrest
- Precise and effortless fingertip joystick control of all mast functions
- Safe and highly efficient load handling

- Linde Dual Motor Drive**
- Two powerful AC drive motors
- Seamless acceleration and variable torque characteristics
- Power moduls in DCB-technology for high performance and efficiency cooling



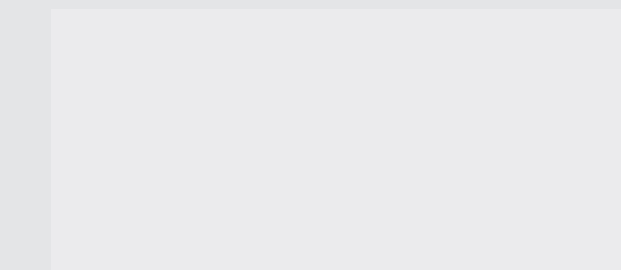
- Linde operator's compartment**
- Ergonomically designed for efficient, fatigue-free working
- Spacious operator's compartment with generous floor plate area
- Cushioned comfort – mast and drive axle are isolated from the chassis and cab by a unique resilient suspension system that absorbs shock loadings



- Linde compact drive axle**
- Twin drive design with high performance Linde AC technology
- Integrated AC lift motor
- Optimum energy efficiency
- Maintenance-free oil-bath disc brake
- Efficient power moduls housed in sealed unit for complete protection
- Short, energy saving power connections



- Linde energy management**
- Optimised energy consumption
- Accurate battery condition indicator
- Simple horizontal or vertical battery changing options
- Optional built-in high frequency charger for convenience and flexibility
- Record of battery usage

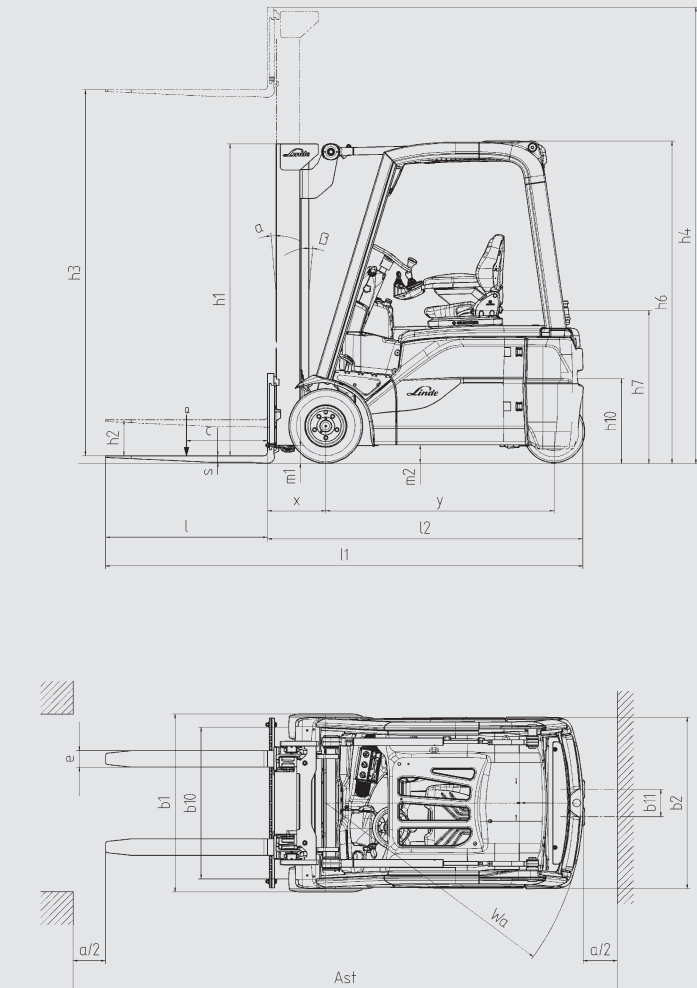


Technical Data according to VDI 2198

| Characteristics | Linde Forklift Models | | | | | | | | | | | |
|-----------------|-----------------------|---------------------------|---------------------------|---------------------------|---------------------------|---------------------------|---------------------------|------------------------------|---------------------------|---------------------------|-------------------------------------|--|
| | 1.1 Manufacturer | 1.2 Model designation | 1.2a Series | 1.3 Power unit | 1.4 Operation | 1.5 Load capacity | 1.6 Load centre | 1.8 Axle centre to fork face | 1.9 Wheelbase | 2.1 Service weight | 2.2 Axle load with load, front/rear | 2.3 Axle load without load, front/rear |
| | LINDE | E12 (575Ah) | E15 (920Ah) | E14 (460Ah) | E16G (460Ah) | E16 (575Ah) | E16L (690Ah) | E16H (700Ah) | E18 (575Ah) | E18L (690Ah) | E20L (690Ah) | |
| | | 386-02 | 386-02 | 386-02 | 386-02 | 386-02 | 386-02 | 386-02 | 386-02 | 386-02 | 386-02 | 386-02 |
| | | Battery | Battery | Battery | Battery | Battery | Battery | Battery | Battery | Battery | Battery | Battery |
| | | Seat | Seat | Seat | Seat | Seat | Seat | Seat | Seat | Seat | Seat | Seat |
| | Q (t) | 1.2 | 1.5 | 1.4 | 1.6 | 1.6 | 1.6 | 1.6 | 1.8 | 1.8 | 2.0 | |
| | c (mm) | 500 | 500 | 500 | 500 | 500 | 500 | 500 | 500 | 500 | 500 | |
| | x (mm) | 365 | 365 | 365 | 365 | 365 | 365 | 365 | 370 | 370 | 374 | |
| | y (mm) | 1156 ¹⁾ | 1301 ¹⁾ | 1301 ¹⁾ | 1301 ¹⁾ | 1409 ¹⁾ | 1517 ¹⁾ | 1461 ¹⁾ | 1409 ¹⁾ | 1517 ¹⁾ | 1517 ¹⁾ | |
| | (kg) | 2805 ²⁾ | 2985 ²⁾ | 2890 ²⁾ | 3095 ²⁾ | 3060 ²⁾ | 3075 ²⁾ | 3340 ²⁾ | 3295 ²⁾ | 3270 ²⁾ | 3335 ²⁾ | |
| | (kg) | 3458 / 547 | 3912 / 573 | 3766 / 524 | 4099 / 596 | 4097 / 563 | 4112 / 563 | 4202 / 738 | 4466 / 629 | 4472 / 598 | 4787 / 548 | |
| | (kg) | 1360 / 1445 ²⁾ | 1415 / 1570 ²⁾ | 1435 / 1455 ²⁾ | 1435 / 1660 ²⁾ | 1515 / 1545 ²⁾ | 1600 / 1475 ²⁾ | 1655 / 1685 ²⁾ | 1555 / 1740 ²⁾ | 1640 / 1630 ²⁾ | 1635 / 1700 ²⁾ | |
| | SE | SE | SE | SE | SE | SE | SE | SE | SE | SE | SE | |
| | 180/70-8 (18x7-8) | 180/70-8 (18x7-8) | 180/70-8 (18x7-8) | 180/70-8 (18x7-8) | 180/70-8 (18x7-8) | 180/70-8 (18x7-8) | 180/70-8 (18x7-8) | 180/70-8 (18x7-8) | 200/50-10 | 200/50-10 | 200/50-10 | |
| | 15x4 1/2-8 | 15x4 1/2-8 | 15x4 1/2-8 | 15x4 1/2-8 | 15x4 1/2-8 | 15x4 1/2-8 | 15x4 1/2-8 | 140/55-9 | 140/55-9 | 140/55-9 | 140/55-9 | |
| | 2x / 2 | 2x / 2 | 2x / 2 | 2x / 2 | 2x / 2 | 2x / 2 | 2x / 2 | 2x / 2 | 2x / 2 | 2x / 2 | 2x / 2 | |
| | b10 (mm) | 930 | 930 | 930 | 930 | 930 | 930 | 930 | 965 | 965 | 965 | |
| | b11 (mm) | 168 | 168 | 168 | 168 | 168 | 168 | 172 | 172 | 172 | 172 | |
| | a/b (°) | 5.0 / 7.0 | 5.0 / 7.0 | 5.0 / 7.0 | 5.0 / 7.0 | 5.0 / 7.0 | 5.0 / 7.0 | 5.0 / 7.0 | 5.0 / 7.0 | 5.0 / 7.0 | 5.0 / 7.0 | |
| | h1 (mm) | 2019 | 2019 | 2019 | 2019 | 2019 | 2019 | 2194 | 2019 | 2019 | 2019 | |
| | h2 (mm) | 150 | 150 | 150 | 150 | 150 | 150 | 150 | 150 | 150 | 150 | |
| | h3 (mm) | 2800 | 2800 | 2800 | 2800 | 2800 | 2800 | 3150 | 2800 | 2800 | 2800 | |
| | h4 (mm) | 3401 | 3401 | 3401 | 3401 | 3401 | 3401 | 3751 | 3401 | 3401 | 3401 | |
| | h6 (mm) | 1970 | 1970 | 1970 | 1970 | 1970 | 1970 | 2130 | 1970 | 1970 | 1970 | |
| | h7 (mm) | 908 | 908 | 908 | 908 | 908 | 908 | 1065 | 908 | 908 | 908 | |
| | h10 (mm) | 510 | 510 | 510 | 510 | 510 | 510 | 594 | 510 | 510 | 510 | |
| | l1 (mm) | 2601 | 2746 | 2746 | 2766 | 2854 | 2962 | 2906 | 2879 | 2967 | 2971 | |
| | l2 (mm) | 1701 | 1846 | 1846 | 1866 | 1954 | 2062 | 2006 | 1979 | 2067 | 2071 | |
| | b1/b2 (mm) | 1090 / 1050 | 1090 / 1050 | 1090 / 1050 | 1090 / 1050 | 1090 / 1050 | 1090 / 1050 | 1090 / 1050 | 1172 / 1050 | 1172 / 1050 | 1172 / 1050 | |
| | s/e/l (mm) | 40 x 80 x 900 | 40 x 80 x 900 | 40 x 80 x 900 | 40 x 80 x 900 | 40 x 80 x 900 | 40 x 80 x 900 | 40 x 80 x 900 | 45 x 100 x 900 | 45 x 100 x 900 | 45 x 100 x 900 | |
| | 2A | 2A | 2A | 2A | 2A | 2A | 2A | 2A | 2A | 2A | 2A | |
| | b3 (mm) | 980 | 980 | 980 | 980 | 980 | 980 | 980 | 980 | 980 | 980 | |
| | m1 (mm) | 89 | 89 | 89 | 89 | 92 | 97 | 97 | 97 | 97 | 97 | |
| | m2 (mm) | 96 | 96 | 96 | 96 | 96 | 96 | 96 | 96 | 96 | 96 | |
| | Ast (mm) | 3040 ³⁾ | 3177 ³⁾ | 3177 ³⁾ | 3196 ³⁾ | 3281 ³⁾ | 3389 ³⁾ | 3332 ³⁾ | 3305 ³⁾ | 3394 ³⁾ | 3397 ³⁾ | |
| | Ast (mm) | 3164 ³⁾ | 3301 ³⁾ | 3301 ³⁾ | 3320 ³⁾ | 3405 ³⁾ | 3513 ³⁾ | 3456 ³⁾ | 3429 ³⁾ | 3518 ³⁾ | 3522 ³⁾ | |
| | Wa (mm) | 1349 | 1486 | 1486 | 1505 | 1590 | 1641 | 1609 | 1698 | 1698 | 1698 | |
| | b13 (mm) | 0 | 0 | 0 | 0 | 0 | 0 | 0 | 0 | 0 | 0 | |
| | (km/h) | 12.5 / 13.5 | 12.5 / 13.5 | 16 / 16 | 16 / 16 | 16 / 16 | 16 / 16 | 16 / 16 | 16 / 16 | 16 / 16 | 16 / 16 | |
| | (m/s) | 0.3 / 0.5 | 0.3 / 0.5 | 0.4 / 0.6 | 0.4 / 0.6 | 0.4 / 0.6 | 0.4 / 0.6 | 0.4 / 0.6 | 0.4 / 0.6 | 0.4 / 0.6 | 0.4 / 0.6 | |
| | (m/s) | 0.58 / 0.47 | 0.58 / 0.47 | 0.58 / 0.47 | 0.58 / 0.47 | 0.6 / 0.55 | 0.58 / 0.47 | 0.58 / 0.47 | 0.58 / 0.47 | 0.58 / 0.47 | 0.58 / 0.47 | |
| | (N) | 2400 / 2400 | 2400 / 2400 | 2300 / 2300 | 2300 / 2300 | 2300 / 2300 | 2300 / 2300 | 2300 / 2300 | 2300 / 2300 | 2300 / 2300 | 2300 / 2300 | |
| | (N) | 7500 / 7500 | 7500 / 7500 | 11000 / 11000 | 11000 / 11000 | 11000 / 11000 | 11000 / 11000 | 11000 / 11000 | 11000 / 11000 | 11000 / 11000 | 11000 / 11000 | |
| | (%) | 7.7 / 11.4 | 7.1 / 10.9 | 7.3 / 11.0 | 6.7 / 10.3 | 6.8 / 10.4 | 6.8 / 10.4 | 6.6 / 9.9 | 6.2 / 9.6 | 6.2 / 9.6 | 6.2 / 9.7 | |
| | (%) | 19.4 / 28.3 | 17.3 / 26.5 | 27.1 / 42.1 | 24.6 / 38.9 | 24.8 / 39.4 | 24.7 / 39.2 | 23.3 / 35.6 | 22.6 / 36.2 | 22.7 / 36.5 | 21.5 / 35.7 | |
| | (s) | 5.8 / 5.0 | 5.8 / 5.0 | 4.5 / 3.8 | 4.5 / 3.8 | 4.5 / 3.8 | 4.5 / 3.8 | 4.5 / 3.8 | 4.5 / 3.8 | 4.5 / 3.8 | 4.5 / 3.8 | |
| | hydr./mech. | hydr./mech. | hydr./mech. | hydr./mech. | hydr./mech. | hydr./mech. | hydr./mech. | hydr./mech. | hydr./mech. | hydr./mech. | hydr./mech. | |
| | (kW) | 2x 3.5 | 2x 3.5 | 2x 4.6 | 2x 4.6 | 2x 4.6 | 2x 4.6 | 2x 4.6 | 2x 4.6 | 2x 4.6 | 2x 5 | |
| | (kW) | 5 | 5 | 10 | 10 | 10 | 10 | 10 | 10 | 10 | 11 | |
| | A | 43 535 / A | 43 535 / A | 43 531 / A | 43 531 / A | 43 531 / A | 43 531 / A | 43 531 / A | 43 531 / A | 43 531 / A | 43 531 / A | |
| | (V/Ah) | 24 / 575/625 | 24 / 920/1000 | 48 / 460/500 | 48 / 460/500 | 48 / 575/625 | 48 / 690/750 | 48 / 700/775 | 48 / 575/625 | 48 / 690/750 | 48 / 690/750 | |
| | (kg) | 708 | 708 | 856 | 856 | 1013 | 1013 | 856 | 1013 | 1013 | 1013 | |
| | (kWh/h) | 3.9 | 3.9 | 4.4 | 4.6 | 4.6 | 4.7 | 4.8 | 4.8 | 5.1 | 5.3 | |
| | Digital/stepless | Digital/stepless | Digital/stepless | Digital/stepless | Digital/stepless | Digital/stepless | Digital/stepless | Digital/stepless | Digital/stepless | Digital/stepless | Digital/stepless | |
| | (bar) | 170 | 170 | 170 | 170 | 170 | 170 | 170 | 170 | 170 | 170 | |
| | (l/min) | 32 | 32 | 32 | 32 | 32 | 32 | 32 | 32 | 32 | 32 | |
| | (dB(A)) | < 65 | < 65 | < 65 | < 65 | < 65 | < 65 | < 65 | < 65 | < 65 | < 65 | |

1) Mast in vertical position
2) Figures with battery, see line 6.4/6.5.

3) Including a 200 mm (min.) operating aisle clearance.



| Standard mast (in mm) | | E12/E14/E15/E16/E18/E16L/E18L/E20L | | | | E16H | | |
|---|-----------|------------------------------------|------|------|------|------|------|------|
| Lift | h3 | 2800 | 3150 | 3850 | 4250 | 3150 | 3850 | 4250 |
| Overall height, retracted (to 150 mm free lift) | h1 | 2021 | 2196 | 2546 | 2746 | 2196 | 2546 | 2746 |
| Overall height extended | h4 | 3363 | 3713 | 4453 | 4813 | 3713 | 4453 | 4813 |

| Duplex mast (in mm) | | E12/E14/E15/E16/E18/E16L/E18L/E20L | | | | E16H | | |
|---------------------------|-----------|------------------------------------|------|------|---|------|------|---|
| Lift | h3 | 2795 | 3145 | 3845 | - | 3145 | 3845 | - |
| Overall height, retracted | h1 | 1946 | 2121 | 2471 | - | 2121 | 2471 | - |
| Overall height, extended | h4 | 3377 | 3727 | 4427 | - | 3727 | 4427 | - |
| Special free lift | h2 | 1343 | 1518 | 1868 | - | 1518 | 1868 | - |

| Triplex mast (in mm) | | E12/E14/E15/E16/E18/E16L/E18L/E20L | | | | E16H | | |
|---------------------------|-----------|------------------------------------|------|------|---|------|------|---|
| Lift | h3 | 4100 | 4625 | 5475 | - | 4625 | 5475 | - |
| Overall height, retracted | h1 | 1946 | 2121 | 2471 | - | 2121 | 2471 | - |
| Overall height, extended | h4 | 4702 | 5227 | 6077 | - | 5227 | 6077 | - |
| Special free lift | h2 | 1344 | 1519 | 1781 | - | 1519 | 1781 | - |

Other lift heights on request
Minimum lift height does not apply to tall vehicle